



R E V O L U T I O N

S E R I E S

WWW.REVOLUTIONSERIES.ORG

Located at Beyond Stable LLC
11129 IL Route 176 Woodstock, Illinois 60098

Summer Series IIII

CLINIC + SHOW

APRIL 9-11, 2021 | JUNE 25-27, 2021 | AUGUST 6-8, 2021

OFFICIALS:

Founder & Show Manager Ashley Fry
Founder & Show Staff Manager Elizabeth Rietesel-Karlen
Public Relations & Marketing Specialist..... Kathleen Martinez
AnnouncerTBD
Secretary Ashley Fry
Paddock Master Brenda Mareci
Arena Steward Brenda Mareci
Ribbon & Prize DistributorNicole Koeberl & Sharon Llanas
Horse Show Photographer...Brianna Engelkemeir Photography
Course DesignersTBD

JUDGE & CLINICIAN:

April 9-11: Taylor Flury

June 25-27: To Be Announced

August 6-8: To Be Announced

REVOLUTION SERIES 2020/21 DATES:



FEES:

\$80 Nominated Stall Rate - Weekend Permanent Stall

\$95 Non-Nominated Stall Rate - Weekend Permanent Stall

Venue Management requires 3 bags of shavings to be used in stalls. Revolution Series recommends 4-6 bags. Stalls sanitized between each use.

\$25 Revolution Series USHJA Outreach Fee

Per horse and rider combination for those accruing points towards USHJA Outreach program with the Revolution Series.

\$35 One-time 2020-21 Show Season Nomination Fee

Per horse and rider combination. Includes point accrualment, Year End Award nominations, guaranteed reduced stall rate at every show. *For additional horse(s): add \$10 per horse.*

\$15 2020-21 Non-Nominated Show/Riding Fee

No point accrualment, No Year End Award nominations.

*\$80 Tack Stall

*\$35 Trailer in/Day option

*\$50 Non-showing fee

*\$20 Per Class (3 class minimum)

*\$35 Equitation Challenges, Performance Hunter Classic (Requires entry of at least one Division)

*\$35 High Jump, Mini Prix, 4 Bar (Requires entry of at least one Division)

*\$45 Classics and Derbies (Requires entry of a least one Division)

*\$20 Warm Up class entry/\$10 for additional unjudged warm up classes

*\$35 Office Fee

*\$10 Shavings per Bag

*Now accepting credit cards with mobile check-out! 3% fee applies.

*There will be a \$50 fee for any NSF / returned check

ENTRIES AND STALL RESERVATIONS:

224.645.1744 CALL/TEXT TO RESERVE STALLS & SHAVINGS.

Please send your completed entry TWO WEEKS prior to show to one of the following:

ONLINE ENTRY and STALL RESERVATIONS VISIT:

www.revolutionseries.org

EMAIL ENTRIES TO: www.winterrevseries@aol.com

MAIL ENTRIES TO: The Revolution Series, 8716 Hickory Lane, Wonder Lake, IL 60097



The Revolution Series is proud to be an USHJA Outreach show
for our 2021 Show Series!

April 9-11 | June 25-27 | August 6-8 | September 17-19

USHJA Outreach Rider membership is free

To learn more and become an USHJA Outreach member visit: www.ushja.org/outreach

REVOLUTION SERIES Protocol for Clinic + Shows under Covid-19

If you have been exposed to coronavirus, please help us stay safe, and stay home.

A signed COVID waiver is required. Masks should be worn for all unmounted exhibitors inside the show buildings including the barn. Please practice 6 feet social distancing guidelines when on the show grounds. The most current CDC guidelines will be followed; monitor our Facebook group for current show information.

Trainers and exhibitors are responsible for tracking temperatures. Anyone feeling unwell, or with a temperature should stay home.

REVOLUTION STAFF PRECAUTIONS:

Temperature will be taken of all employees and volunteers daily. Masks will be worn by all Revolution Series staff and volunteers while inside the show buildings and barn.

Revolution Series Staff will be monitoring and reminding trainers and exhibitors about social distancing guidelines.

Stay at home.

If you have been exposed or feel unwell.



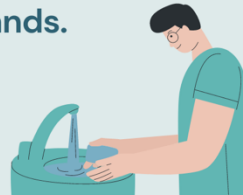
Check your temperature.

Monitor your temperature every day at the show.



Wash your hands.

Bathrooms will be sanitized every 30 minutes. Hand sanitizing stations will also be available.



Practice social distancing.

Please keep a distance of 6 feet from others on show grounds, and when entering the show office.



Barns stabled separately.

Each barn will be stabled in their own aisle.



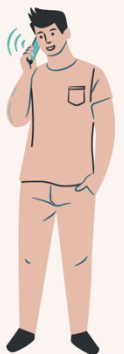
No spectators.

Sorry, no spectators are allowed at this time.



Schooling, Show Office, Ribbons, Food Service.

- Number of horses will be limited in the schooling ring. Jumps to be disinfected with spray after use.
- A maximum of four people in the office at a time with social distancing rules followed.
- Exhibitors are encouraged to fill out a credit card form or leave a check with their Trainer. Trainers will process their check out.
- Ribbons/prizes to be picked up by Trainers at the end of the show day.
- Our food vendor, Pixie Dawgs will have menus available. Please text in orders for prearranged pick-up.



REVOLUTION SERIES CLASSIC PAYOUTS

MINIMUM RIDERS FOR THE PAYOUT SCHEDULE:

\$250 CLASSICS – 7 Riders

\$150-\$200 CLASSICS – 5 Riders

\$100 CLASSICS – 3 Riders

PAYOUT SCHEDULE

\$250 JUMPER CLASSIC

1st \$125 | 2nd \$75 | 3rd \$50

\$200 HUNTER DERBY

1st \$100 | 2nd \$65 | 3rd \$35

\$100 MINI PRIX

1st \$60 | 2nd \$25 | 3rd \$15

\$250 2' HUNTER CLASSIC

1st \$125 | 2nd \$75 | 3rd \$50

\$150 MINI HUNTER DERBY

1st \$75 | 2nd \$50 | 3rd \$25

\$250 CROSSRAIL CLASSIC

1st \$125 | 2nd \$75 | 3rd \$50



YEAR END AWARDS QUALIFICATIONS

Nominated riders participating in the Revolution Series shows from November – September will accumulate points from each show. The nominated riders with the most points at the end of the year will receive special ribbons 1st- 6th. Prizes and ribbons will be awarded at our Year End award party in November. The Division must have at least 3 riders accumulating points with attendance of more than 1 show to qualify for a year end prize and/or ribbon. Ties will be broken by the nominated rider who attended the most shows, and then by the nominated rider with the most points over fences. Final classes in each division at the Series Finals will be weighted 2x more. Equitation Challenges, Hunter Handy/Derby, Jumper Classic, Mini Prix/High Jump, 2' Hunter Classic, Mini Hunter Derby and Crossrail Classic will be shown as Invitational Classics. No yearly points will be accrued for these classes since they are not divisions. Instead, riders will accumulate their points and the top scoring/placing riders will be invited into our Series Finals Invitational with increased prize money.

LEADLINE and INTRODUCTORY CLASSES

LEAD LINE

CLASS 1: Children are only eligible for leadline walk/trot. Class will run with one rider or more.

CLASS 2: Children are eligible only. Handlers are allowed but not mandatory for children just learning to trot on their own. Class will run with one rider or more and will be judged.

1	LEADLINE	CLASS FEE: \$20
2	LEADLINE WALK/TROT	CLASS FEE: \$20

USHJA OUTREACH INTRODUCTORY WALK/TROT/INDIVIDUAL CANTER



Horses and riders will be judged at the walk and trot. Riders will be called to the center of the ring and be called individually to canter one lap in the direction of their choice. Riders can cross enter into Groundpoles division. Riders who have jumped X's or above at any show are ineligible.

*Additional rules for Finals. ENTRY FEE: \$20 PER CLASS

3	USHJA OUTREACH INTRODUCTORY WALK/TROT U/S
4	USHJA OUTREACH INTRODUCTORY WALK/TROT EQUITATION FLAT
5	USHJA OUTREACH INDIVIDUAL CANTER U/S

HUNTER and EQUITATION DIVISIONS

TIP THOROUGHBRED CROSS RAILS



Open to any rider who presents the office with a TIP number for horses that have shown less than one consecutive year. Trotting into lines and cantering out while showing a simple change of lead is permissible. Horses may not cross enter into classes jumping higher than 2'3". TIP ribbons to be awarded for 1st-6th. Fences: X's. ENTRY FEE: \$20 PER CLASS

6,7	TIP THOROUGHBRED CROSS RAILS O/F	X'S
8	TIP THOROUGHBRED CROSS RAILS U/S	

GROUND POLES HUNTER AND EQUITATION

Open to eligible Jr./Amateur riders have not jumped above cross rails at any show and/or won 9 or more blue ribbons. Green horses may audit (non-judged) ground pole classes with an Amateur or Professional. ENTRY FEE: \$20 PER CLASS

9	GROUND POLES WALK/TROT HUNTER U/S	
10	GROUND POLES WALK/TROT/INDIVIDUAL CANTER HUNTER U/S	
11,12	GROUND POLES HUNTER O/F	GROUNDPOLES
13	GROUND POLES WALK/TROT EQUITATION FLAT	
14	GROUND POLES WALK/TROT/INDIVIDUAL CANTER EQUITATION FLAT	
15	GROUND POLES EQUITATION O/F	GROUNDPOLES

TIP THOROUGHBRED SUITABLE HUNTER



Open to any rider who presents the office with TIP number. TIP ribbons to be awarded 1st-6th. Fences: 2'6". ENTRY FEE: \$20 PER CLASS

16,17	TIP THOROUGHBRED SUITABLE HUNTER O/F	2'6"
18	TIP THOROUGHBRED SUITABLE HUNTER U/S	

USHJA OUTREACH FUTURE HUNTER



Open to any horse and rider showing 2'6". Fences: 2'6". ENTRY FEE: \$20 PER CLASS.

19, 20	USHJA OUTREACH FUTURE HUNTER O/F	2'6"
21	USHJA OUTREACH FUTURE HUNTER U/S	

USHJA OUTREACH WORKING HUNTER



Eligible for horses showing at least 2'9". Fences: 3'0-3'3". ENTRY FEE: \$20 PER CLASS.

24,25	USHJA OUTREACH WORKING HUNTER O/F	3'0-3'3"
26	USHJA OUTREACH WORKING HUNTER U/S	

JUNIOR/ADULT AMATEUR EQUITATION

Open to Jr./Adult Amateurs showing 2'6" and above. Fences: 2'6". ENTRY FEE: \$20 PER CLASS.

27	JUNIOR/ADULT AMATEUR EQUITATION O/F	2'6"
28	JUNIOR/ADULT AMATEUR EQUITATION FLAT	

USHJA OUTREACH MAIDEN RIDER HUNTER AND EQUITATION



Open to Jr./Adult Amateur riders that have won less than six blue ribbons at any show. Open to any horse. Riders may enter divisions that don't exceed 2'0". Riders are not eligible to compete if they have won 9 or more blue ribbons showing at this level. Fences: X's. ENTRY FEE: \$20 PER CLASS

40,41	USHJA OUTREACH MAIDEN RIDER HUNTER O/F	X'S
42	USHJA OUTREACH MAIDEN RIDER HUNTER U/S	
43,103	USHJA OUTREACH MAIDEN RIDER EQUITATION O/F	X'S
44	USHJA OUTREACH MAIDEN RIDER EQUITATION FLAT	

GREEN AS GRASS HUNTER

Open to horses that have shown less than one consecutive year. Open to any rider. Trotting into lines and cantering out while showing a simple change of lead is permissible. Horses may cross enter into 2'3" classes. Fences: X's. ENTRY FEE: \$20 PER CLASS

45,46	GREEN AS GRASS HUNTER O/F	X'S
47	GREEN AS GRASS HUNTER U/S	

BEGINNER RIDER HUNTER AND EQUITATION

Eligible to riders who haven't shown above 2'3". Riders are not eligible to compete if they have won 9 or more blue ribbons showing at this level. No oxers. Fences: 1'9"-2'0". ENTRY FEE: \$20 PER CLASS

50,51	BEGINNER RIDER HUNTER O/F	1'9"-2'0"
52	BEGINNER RIDER HUNTER U/S	
53	BEGINNER RIDER EQUITATION O/F	1'9"-2'0"
54	BEGINNER RIDER EQUITATION FLAT	

USHJA OUTREACH LOW EQUITATION



Open to Jr./Adult Amateur riders showing 2'6 and below. Fences: 2'3". ENTRY FEE: \$20 PER CLASS

104,105	USHJA OUTREACH LOW EQUITATION O/F	2'3"
106	USHJA OUTREACH LOW EQUITATION FLAT	

USHJA OUTREACH LOW HUNTER



Open to any horse and rider showing 2'6" and below. Fences: 2'3". ENTRY FEE: \$20 PER CLASS

56,57	USHJA OUTREACH LOW HUNTER O/F	2'3"
58	USHJA OUTREACH LOW HUNTER U/S	

GREEN HUNTER

Open to all riders. Open to horses who have shown for less than 2 consecutive years under 2'3". No Oxers. Fences: 1'9"-2'0". ENTRY FEE: \$20 PER CLASS

59,60	GREEN HUNTER O/F	1'9"-2'0"
61	GREEN HUNTER U/S	

TIP THOROUGHBRED HUNTER DERBY



Open to any rider who presents the office with Jockey Club TIP number. TIP ribbons awarded 1st – 6th with Medal and prize money to the Winner. \$50 in prize money awarded through TIP. Minimum 3 Riders. Fences: 2'3"-2'6". ENTRY FEE: \$35

70	TIP THOROUGHBRED HUNTER DERBY	2'3"-2'6"
----	-------------------------------	-----------

WARM UP

Open to all riders at any height including ground poles. Riders may return for additional unjudged rounds for \$10 each round but must be entered in the warm up (judged) class and in one division. ENTRY FEE: \$20 PER CLASS/\$10 EACH ADDITIONAL ROUND IN CLASS

80	GROUND POLES WARM UP O/F	
81	2'6" WARM UP O/F	2'6"
82	3'0"-3'3" WARM UP O/F	3'0"-3'3"
83	X'S SCHOOLING O/F	X'S
84	1'9"-2'0" WARM UP O/F	1'9"-2'0"
85	2'3" WARM UP O/F	2'3"

JUMPER SECTIONS

GREEN AS GRASS JUMPER

Open to any horse that has shown less than 2 years. No jumping combinations. Horse may cross enter into 2'6" classes. Fences: 2'0"-2'3". ENTRY FEE: \$20 PER CLASS
29,30,31 GREEN AS GRASS JUMPER 2'0"-2'3"

USHJA OUTREACH FUTURE JUMPER



Open to any horse and rider showing 2'6". Jump combinations are allowed. Fences: .75-.80m. ENTRY FEE: \$20 PER CLASS
32,33,34 USHJA OUTREACH FUTURE JUMPER .75-.80m

USHJA OUTREACH TRAINING JUMPER



Open to any horse and rider showing 2'6" and above. Fences: 1-1.05m. ENTRY FEE: \$20 PER CLASS
35,36,37 USHJA OUTREACH TRAINING JUMPER 1-1.05m

USHJA OUTREACH PUDDLE JUMPER



Open to Jr. or Amateur riders only. No Oxers. Can cross enter into Green As Grass Jumpers. Fences: .70m. ENTRY FEE: \$20 PER CLASS
64,65,66 USHJA PUDDLE JUMPER .70m

TIP THOROUGHBRED HOPEFUL JUMPER



Open to Jr. or Amateur riders only. No Oxers. Fences: 2'6". ENTRY FEE: \$20 PER CLASS
67,68,69 TIP THOROUGHBRED HOPEFUL JUMPER 2'6"

TIP THOROUGHBRED JUMPER DERBY



Open to any rider who presents the office with Jockey Club TIP number. Must have competed in at least one Jumper division to be eligible. Jump height not to exceed 2'6" TIP ribbons awarded 1-6th with Medal and prize money to the Winner. \$50 in prize money awarded through TIP. Minimum 3 riders. Fences: 2'6". ENTRY FEE: \$35
72 TIP THOROUGHBRED JUMPER DERBY 2'6"

CLASSICS and EQUITATION CHALLENGES

The top placing riders from each class during the 2020-21 show season will be invited to the Revolution Series Invitationals at Finals.

\$200 HUNTER DERBY (APRIL ONLY)

This class is open only at our April indoor show. Open to riders or horses only showing at 2'6" or above and entering at least one division. 8-10 jumps displaying the handiness of a hunter. May include trot jumps, rollback turns, sharper turns, broken lines, hand-gallop fences, a gate to open or close while mounted, properly show mounting and dismounting. Riders are awarded long ribbons and a special classic prize is awarded to the winner of the class. See Classic payout chart. Payouts will be adjusted if class minimums are not met. Requires 3 riders to run. *Additional rules for Finals.

Fences: 2'6". ENTRY FEE: \$45

22

\$200 HUNTER DERBY

2'6"

\$200 USHJA OUTREACH HUNTER DERBY



This class is open only at our June and August outdoor shows. Open to riders or horses only showing at 2'6" or above and entering at least one division. Rider will have a single round with 10 fences at 2'6" with 3 options at 2'9" that display the handiness of a hunter. May include trot jumps, rollback turns, sharper turns, broken lines, hand-gallop fences, a gate to open or close while mounted, properly show mounting and dismounting. Riders are awarded long ribbons and a special classic prize is awarded to the winner of the class. See Classic payout chart. Payouts will be adjusted if class minimums are not met. Requires 3 riders to run. *Additional rules for Finals. Fences: 2'6"-2'9". ENTRY FEE: \$45

22

\$200 USHJA OUTREACH HUNTER DERBY

2'6'-2'9"

EQUITATION CHALLENGE

Open to Junior or Amateur riders showing in at least one 2'6" division. Top 4 riders will be called back for a test. Winner will receive a medal.

*Additional rules for Finals. Fences: 2'6". ENTRY FEE: \$25

23

EQUITATION CHALLENGE

2'6"

\$100 MINI PRIX

Height is 3'6" - 4'0" to include combinations. One Joker fence in both rounds which Management will decide the height and offer 6 seconds off the time limit if cleared. Table II Sec A format. Payouts will be adjusted if class minimums are not met. Requires 3 riders to run.

ENTRY FEE: \$35

38

\$100 MINI PRIX

3'6" - 4'0"

\$250 JUMPER CLASSIC

Open to Jr or Amateur riders. Jumping combinations allowed. Riders are awarded long ribbons and a special prize is awarded to the winner. Payouts will be adjusted if class minimums are not met. Requires 3 riders to run. See Classic payout chart. *Additional rules for Finals. Fences: 2'6"
ENTRY FEE: \$45

39 \$250 JUMPER CLASSIC 2'6"

\$250 2' HUNTER CLASSIC

Open to Jr/Adult Amateur riders showing up to 2'3". Riders may be asked to ride a bending line, a roll back or trot jump. Long ribbons and a special prize to be awarded to the winner. Payouts will be adjusted if class minimums are not met. Requires 3 riders to run. See Classic payout chart.
*Additional rules for Finals. Fences: 2'0". ENTRY FEE: \$45

55 \$250 2' HUNTER CLASSIC 2'0"

MINI EQUITATION CHALLENGE

Open to Jr or Amateur riders who haven't shown at 2'6" or above. Top 4 riders will be called back for a test or a test will be built within the first course. Winners will receive a medal. *Additional Rules for Finals. Fences: 2'3". ENTRY FEE: \$25

62 MINI EQUITATION CHALLENGE 2'3"

\$150 MINI HUNTER DERBY

Open to Jr/Amateurs only. The top 4 riders will be called back for a Handy round. May include trot jumps, rollback turns, sharper turns, broken lines, hand-gallop fences, a gate to open or close while mounted, properly show mounting and dismounting. Riders are awarded long ribbons and a prize. Payouts will be adjusted if class minimums are not met. Requires 3 riders to run. See Classic payout chart. *Additional rules for Finals. Fences: 2'3".
ENTRY FEE: \$45

63 \$150 MINI HUNTER DERBY 2'3"

\$250 CROSSRAIL CLASSIC

Open to Amateurs only. Open to horses not jumping over 2'0". Riders are awarded long ribbons and a special prize is awarded to the winner. Payouts will be adjusted if class minimums are not met. Requires 3 riders to run. Riders are not eligible to compete if they have won 9 or more blue ribbons showing at this level. See Classic payout chart. *Additional rules for Finals. Fences: X's. ENTRY FEE: \$45

74

\$250 CROSSRAIL CLASSIC

X'S

PERFORMANCE HUNTER CLASSIC

Open to Jr/Adult Amateurs and Professionals showing at least 2'9". Riders may be asked to ride a bending line, a roll back or trot jump. Riders are awarded long ribbons. Requires 3 riders to run. *Additional rules for Finals. Fences: 3'0-3'3". ENTRY FEE: \$35

75

PERFORMANCE HUNTER CLASSIC

3'0-3'3"



THE REVOLUTION SERIES

HORSE SHOW INFORMATION

ATTIRE:

Proper show attire is strongly encouraged for all classes. Collared shirts are permitted for leadline through the Beginner division. Half chaps with paddock boots are permitted in all classes. All Riders are required to wear USEF approved head gear. Braiding is not required, but highly recommended for Finals classes.

CLASSES:

- *USEF rules apply if not covered by Revolution Series.
- *Management reserves the right to cancel, split or combine classes.
- *Entry into any Classic, Eq.Challenge, Derby or Mini Prix/High Jump/4 Bar requires entry in at least one division. Minimum of 4 riders in \$100 Classics.
- *Ribbons will be offered for each class. Prizes offered to Champion and Reserve Champion riders with at least 3 riders. Entry in the entire division is required for Champion and Reserve Champion eligibility. Medals awarded in Equitation Challenges.
- *Exhibitors are expected to be prompt for their classes. 2-minute gate call rule will be enforced and followed.
- *Exhibitors are ALL expected to follow good sportsman like behavior

STALLS:

- *Revolution Series suggests 4-6 shavings.
- *Stalls and shavings can be reserved online or by calling/texting Ashley 224-645-1744. Orders must be in one week prior to show.
- *Stalls will be available after 12:30pm on Friday.
- *Stall requests with completed entries are requested 2 weeks before the show. **Entries Close one week prior to show.**

HOTELS AND CAMPING:

Show Grounds Camping: \$40/night, electric included (30 amp) showers available. For reservations, text show management at: 224.645.1744

Best Western Woodstock Inn: 815.337.0065
Comfort Inn Crystal Lake: 815.444.0040

SCHOOLING:

Friday Schooling: Closes ½ hour before clinic and reopens ½ hour after clinic. **Schooling is closed during clinic.**

Saturday Schooling: Closes 1 hour before start of the show.

Sunday Schooling: Closes 1 hour before start of the show.

Watch our social media pages for any updates on schooling times.
Lunging is allowed in the schooling arena during schooling hours only!

MISCELLANEOUS:

PLEASE NOTE: Cancellations after Monday at noon preceding the show (except for a Vet's excuse) are billed to the trainer.
No outside shavings or straw – call early to order additional shavings.
Stalls have concrete flooring and are not matted.
Horse must have proof of updated Equine Influenza Virus, Equine Herpes Virus vaccinations and Coggins

FOOD VENDOR ON SITE: **Pixie Dawgs**

Present throughout the clinic & show, Saturday-Sunday with a full menu!

Save your profile when you enter online at:

www.revolutionseries.org

Join us on Facebook, Instagram and for announcements, updates and coverage from our shows.

Please review our enclosed COVID-19 Protocols before the show!

REVOLUTION SERIES Summer Series 2021

HORSE

Show Name: _____

Sex: Mare / Gelding Color: _____ Age: _____ Height: _____

OWNER

Name: _____

Address: _____

City: _____ State: _____ Zip: _____

Phone: _____ Age (Date): _____

Email: _____

Signature: _____

Rider 1

Name: _____

Address: _____

City: _____ State: _____ Zip: _____

Phone: _____ Age (Date): _____

Email: _____

Signature: _____

Rider 2

Name: _____

Address: _____

City: _____ State: _____ Zip: _____

Phone: _____ Age (Date): _____

Email: _____

Signature: _____

Trainer / Barn

Name: _____

Address: _____

City: _____ State: _____ Zip: _____

Phone: _____

Email: _____

Signature: _____

Stabled with: _____

Please submit completed entry 2 weeks prior to show date.

Enter online, or send to one of the below:

ENTER ONLINE AT: www.revolutionseries.org

EMAIL ENTRY TO: winterrevseries@aol.com

MAIL ENTRY TO: The Revolution Series, 8716 Hickory Lane, Wonder Lake, IL 60097

FEE SCHEDULE

NOMINATED STALL FEE \$80 _____

NON-NOMINATED STALL FEE \$95 _____

SHAVINGS _____ X \$10 _____

TACK STALL \$80 _____

ONE TIME 2020-21 NOMINATION FEE \$35 _____

2020-21 NON NOMINATION FEE \$15 _____

REVOLUTION SERIES USHJA OUTREACH FEE \$25 _____

OFFICE FEE \$35 _____

CLASS FEES _____ X \$20 _____

EQUITATION CHALLENGES, PERFORMANCE HUNTER CLASSIC _____ X \$35 _____

MINI PRIX _____ X \$35 _____

CLASSICS, DERBIES _____ X \$45 _____

CLINIC FEE \$ _____

NON-SHOWING FEE \$50 _____

TRAILER-IN FEE (Per Day) \$35 _____

CAMPING ON-SITE \$40/NIGHT _____

TOTAL AMOUNT DUE: \$ _____

Make check payable to: Revolution Series. Mobile check out available! Credit cards accepted (a 3% Service Fee applies)

CLINIC SCHEDULE: GROUP: 4:30-6:00pm Friday

Rider 1 Class Numbers: _____

Clinic Group: _____

Rider 2 Class Numbers: _____

Clinic Group: _____

MINORS TO SHOW & CATCH RIDERS PLEASE SIGN:

Catch Rider Parent or Guardian signing this indicates that they have read the clauses below and also give permission for the catch rider minor to compete per the agreement below.

"Warning: Under the Equine Activity Liability Act, each participant who engages in an equine activity expressly assumes the risks of engaging in and legal responsibility for injury, loss, or damage to person or property resulting from the risk of equine activities." (Senate Bill 240-IL)

The signatory(s) below agree(s) to hold the Revolution Series, Inc and their affiliates, employees, and volunteers harmless for lost, damaged, or stolen property and harmless for death or injury or loss to horses, exhibitors and spectators before, during or after the horse show.

PERMISSION FOR MINOR TO SHOW – I hereby consent to the entry of

(Name): _____

age (as of 1/1/19) _____, my child, in this horse show and certify that I have read the representation and statements, and that the same may be deemed a part hereof and hereby accept responsibility there under for the participation of said minor.

Signature below of Parent/Guardian:



Catch every new episode of
HORSE SHOW LIFE

Hosted by
Elizabeth
Rietesel-
Karlen

Only on
www.
revolutionseries.org



Revolution Series, Inc. ENTRY AGREEMENT

I have read the Revolution Series, Inc. (the “Revolution Series”) Entry Agreement as printed in the Prize List for this Competition and agree to all of its provisions. I understand and agree that by entering this Competition, I am subject to Revolution Series Rules, the Prize List, and local rules of the competition.

Release, Assumption of Risk, Waiver and Indemnification

This document waives important legal rights. Read it carefully before signing.

I AGREE in consideration for my participation in this Competition to the following:

I AGREE that the “Revolution Series” and “Competition” as used above includes all of their officials, officers, directors, employees, agents, personnel, volunteers and affiliated organizations.

I AGREE that I choose to participate voluntarily in the Competition with my horse, as a rider, driver, handler, vaulter, longeur, lessee, owner, agent, coach, trainer, or as parent or guardian of a junior exhibitor. I am fully aware and acknowledge that horse sports and the Competition involve inherent dangerous risks of accident, loss, and serious bodily injury including broken bones, head injuries, trauma, pain, suffering, or death (“Harm”).

I AGREE to hold harmless and release the Revolution Series and the Competition from all claims for money damages or otherwise for any Harm to me or my horse and for any Harm of any nature caused by me or my horse to others, even if the Harm arises or results, directly or indirectly, from the negligence of the Revolution Series or the Competition.

I AGREE to expressly assume all risks of Harm to me or my horse, including Harm resulting from the negligence of the Revolution Series or the Competition.

I AGREE to indemnify (that is, to pay any losses, damages, or costs incurred by) the Revolution Series and the Competition and to hold them harmless with respect to claims for Harm to me or my horse, and for claims made by others for any Harm caused by me or my horse while at the Competition.

I have read the Revolution Series Rules about protective equipment, including GR801 and, if applicable, EV114 and I understand that I am entitled to wear protective equipment without penalty, and I acknowledge that the Revolution Series strongly encourages me to do so while WARNING that no protective equipment can guard against all injuries. If I am a parent or guardian of a Junior exhibitor, I consent to the child’s participation and AGREE to all of the above provisions and AGREE to assume all of the obligations of this Release on the child’s behalf. I represent that I have the requisite training, coaching and abilities to safely compete in this competition.

I AGREE that if I am injured at this competition, the medical personnel treating my injuries may provide information on my injury and treatment to the Revolution Series on the official Revolution Series accident/injury report form.

BY SIGNING BELOW, I AGREE to be bound by all applicable Revolution Series Rules and all terms and provisions of this entry blank and all terms and provisions of this Prize List.

If I am signing and submitting this Agreement electronically, I acknowledge that my electronic signature shall have the same validity, force and effect as if I affixed my signature by my own hand.

Signature of Rider or Parent of Minor Rider

**Revolution Series Horse Show
Participant Waiver of Release**

Covid-19 Information – Required

1. To the best of your knowledge, have you had close contact with someone with suspected or confirmed COVID-19 infection within the last 14 days?

No _____

Yes _____

Please explain:

2. Are you currently experiencing or have you had any of these symptoms in the last 14 days?

Fever greater than 99.1F _____

Difficulty breathing _____

Persistent cough _____

Sore Throat _____

General malaise (aches, headaches, etc.) _____

I understand that while I am on the premises of Beyond Stable Farm I am required to follow the guidelines that have been provided to me, including, but not limited to: wearing a nose and mouth covering facial mask/covering; following sanitizing protocol as set forth by the Revolution Series Horse Show, state, and the CDC; practicing social distancing as outlined by the Revolution Series Horse Show, state, and CDC. Failure on my part to comply with any guidelines set forth by the Revolution Series Horse Show will result in a request to exit the property and denial of participation in the Revolution Series Horse Show. _____ (initial)

Release of Liability: I agree that neither the Revolution Series Horse Show or the officials & volunteers of this show will be responsible for any accident, damage, loss or injury to horse, owner, rider or other persons or property. It is the condition of entry that each exhibitor shall hold the horse show, the facility & it's management, blameless for any loss or accident to any animal, person or property that may occur while on the premises or during the show. I further agree that I will not hold Revolution Series Horse Show, their owner or employees responsible should I develop symptoms of or receive a diagnosis of COVID-19 following this event. Furthermore, I agree to ride/drive at my own risk and hold harmless any

other owner or exhibitor from any accident or injury sustained by me or my horse while participating in this event. Submission of an entry to this show constitutes agreement of the following: The exhibitor shall indemnify and hold harmless Revolution Series Horse Show, it's manager and their respective agents, contractors, officers, employees, directors, shareholders and assigns (together the "indemnities") harmless against any and all claims, demands, costs, and expenses, including reasonable legal fees, arising from the conduct of management of Exhibitor's business or it's use of the facilities of Beyond Stable Farm from any breach on the part of the Exhibitor, it's agents, contractors, employees, guests or invitees in/on the property of Beyond Stable Farm. If any action or proceeding is brought against and indemnity by reason of any such claim, the Exhibitor, upon notice from the Indemnity shall defend the action or proceeding by counsel acceptable to the Indemnity.

WARNING: UNDER ILLINOIS STATUTE _____, AN EQUINE PROFESSIONAL IS NOT LIABLE FOR AN INJURY TO OR THE DEATH OF A PARTICIPANT IN EQUINE ACTIVITIES RESULTING FROM THE INHERENT RISKS OF EQUINE ACTIVITIES.

RIDER/DRIVER/HANDLER (Mandatory)

Signature Required (Parent/Guardian if Under 18)

Signature _____

Print Name _____

OWNER/AGENT (Mandatory)

Signature Required (Parent/Guardian if Under 18)

Signature _____

Print Name _____

PARENT/GUARDIAN SIGNATURE

(Required if rider/driver/handler is a Minor)

Signature _____

Print Name _____

REVOLUTION SERIES SHOW SCHEDULE

FRIDAY

STALLS AVAILABLE: *APRIL ONLY:* Stalls available at 2:00pm, schooling opens at 3:00pm.

JUNE/AUGUST: Stalls available at 12:00pm, schooling opens at 12:00pm.

SCHOOLING: Closes ½ hour before clinic and reopens ½ hour after clinic. Schooling is closed during the clinic.

CLINIC GROUP: 4:30-6:00pm.

SATURDAY & SUNDAY

SCHOOLING: Closes 1 hour before the start of the show. Watch our social media for any updates on schooling times.

8:00 AM SATURDAY:

- 1 Lead Line
- 2 Lead Line Walk/Trot
- 3 USHJA Outreach Introductory Walk/Trot
- 4 USHJA Outreach Introductory Walk/Trot Equitation
- 5 USHJA Outreach Walk/Trot/Individual Canter
- 9 Walk/Trot Hunter for Ground Poles U/S
- 10 W/T/Individual Canter Hunter for Ground Poles U/S
- 13 Walk/Trot Equitation for Ground Poles Flat
- 14 W/T/Individual Canter Equitation for Ground Poles Flat
- 80 Warm Up Ground Poles O/F
- 11,12 Ground Poles Hunter O/F
- 15 Ground Poles Eq O/F
- 58 USHJA Outreach Low Hunter U/S
- 106 USHJA Outreach Low Equitation Flat
- 85 2'3" Warm Up O/F
- 56,57 USHJA Outreach Low Hunter O/F 2'3"
- 104,105 USHJA Outreach Low Equitation O/F
- 62 Mini Equitation Challenge 2'3"
- 63 \$150 Mini Hunter Derby 2'3"
- 81 2'6" Warm Up O/F
- 19,20 USHJA Outreach Future Hunter O/F 2'6"
- 16,17 TIP Suitable Hunter O/F 2'6"
- 27 Jr/Adult Amateur Equitation O/F 2'6"
- 23 Equitation Challenge O/F 2'6"
- 82 3'0"-3'3" Warm Up O/F
- 24,25 USHJA Outreach Working Hunter O/F 3'0"-3'3" *Sponsored by: Idlehour MagnaWave*
- 26 USHJA Outreach Working Hunter U/S *Sponsored by: Idlehour MagnaWave*
- 28 Jr/Adult Amateur Equitation Flat

SATURDAY CONTINUED

- 18 TIP Suitable Hunter U/S
- 21 USHJA Outreach Future Hunter U/S
- 70 TIP Hunter Derby O/F 2'6"
- 22 USHJA Outreach(JUN-AUG Only) \$200 Hunter Derby O/F 2'6" (2'9")
- 75 Performance Hunter Classic O/F 3'3"-3'6"
- 64 USHJA Outreach Puddle Jumpers I .70m
- 29 Green as Grass Jumpers I 2'0"-2'3"
- 67 TIP Hopeful Jumpers I 2'6"
- 32 USHJA Outreach Future Jumpers I .75-.80m
- 35 USHJA Outreach Training Jumpers I 1-1.05m
- 38 \$100 Mini Prix *Sponsored by: Blue Gate Farm, LLC*

8:00 AM SUNDAY:

- 65,66 USHJA Outreach Puddle Jumpers II .70m
- 30,31 Green as Grass Jumpers II 2'0"-2'3"
- 68,69 TIP Hopeful Jumpers II 2'6"
- 33,34 USHJA Outreach Future Jumpers II .75-.80m
- 39 \$250 Jumper Classic 2'6"
- 72 TIP Jumper Derby 2'6"
- 36,37 USHJA Outreach Training Jumpers II 1-1.05m
- 83 X's Schooling O/F
- 40,41 USHJA Outreach Maiden Rider Hunter O/F *Sponsored by: Chasing Dreams Equestrian*
- 43,103 USHJA Outreach Maiden Rider Equitation O/F X's
- 45,46 Green as Grass Hunter X's
- 6,7 TIP Crossrails Hunter O/F X's
- 74 \$250 Crossrails Classic X's
- 42 USHJA Maiden Rider Hunter U/S *Sponsored by: Chasing Dreams Equestrian*
- 44 USHJA Maiden Rider Equitation Flat
- 47 Green as Grass Hunter U/S
- 8 TIP Crossrails Hunter U/S
- 61 Green Hunter U/S
- 52 Beginner Rider Hunter U/S
- 54 Beginner Rider Equitation Flat
- 84 1'9"-2'0" Warm-Up O/F
- 59,60 Green Hunter O/F 1'9"-2'0"
- 50,51 Beginner Rider Hunter O/F 1'9"-2'0"
- 53 Beginner Rider Equitation O/F 1'9"-2'0"
- 55 \$250 2' Hunter Classic 2'0"

BEST TURNED OUT BARN AISLE CONTEST

you are now being judged.

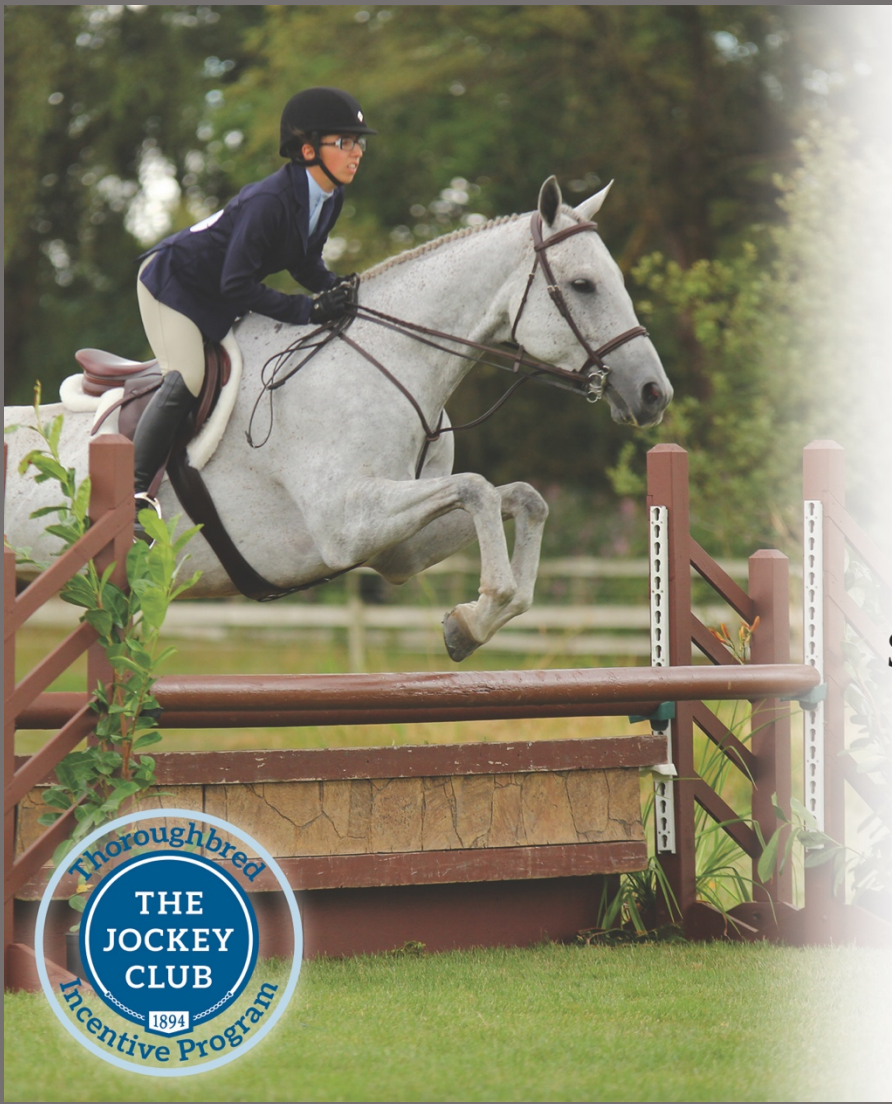
Trainers, show us your clean, organized and decorated show home away from home, and we could award you with a 50% off tack stall!



INCONSPICUOUS JUDGING WILL TAKE
PLACE SATURDAY AND SUNDAY.

Winner will be announced the week following the show, and the winning barn will receive their tack stall discount for the next clinic + show!





Ride a **Thoroughbred**?

Provide T.I.P. Numbers
with your entries.

For more information and to see
if your Thoroughbred is eligible,
visit *tjctip.com*.

Show us what your Thoroughbred
can do at *facebook.com/tjctip*

Good luck to the
Thoroughbreds and riders!

THANK YOU TO OUR SERIES SPONSORS!



Blue Gate Farm, LLC

Idlehour MagnaWave

Cutting Edge Equine Veterinary Services

KT Custom Jumps

Contact us at: www.winterrevseries@aol.com for Sponsorship opportunities.