



REVOLUTION

---

SERIES

[WWW.REVOLUTIONSERIES.ORG](http://WWW.REVOLUTIONSERIES.ORG)

Located at Beyond Stable LLC  
11129 IL Route 176 Woodstock, Illinois 60098

Winter Series III

---

CLINIC + SHOW  
DECEMBER 11-13, 2020

## OFFICIALS:

**Founder & Show Manager** .....Ashley Fry  
**Founder & Show Staff Manager** ..... Elizabeth Rietesel-Karlen  
**Public Relations & Marketing Specialist**..... Kathleen Martinez  
**Announcer** ..... Brenda Mareci  
**Secretary** ..... Holly Jarovisk  
**Paddock Master** ..... Brenda Mareci  
**Arena Stewards** ..... Elizabeth Rietesel-Karlen & Ashley Fry  
**Ribbon & Prize Distributor** .....Nicole Koeberl & Sharon Llanas  
**Horse Show Photographer**...Brianna Engelkemeir Photography  
**Course Designers**.....Ashley Fry, Elizabeth Rietesel-Karlen

## JUDGE & CLINICIAN:

**DECEMBER 11-13: Tina Judge-Boyle**

## REVOLUTION SERIES 2020/21 DATES:



## FEES:

**\*\$48 Nominated Stall Rate - Weekend Permanent Stall**

**\*\$60 Non-Nominated Stall Rate - Weekend Permanent Stall**

Venue Management requires 3 bags of shavings to be used in stalls. Revolution Series recommends 4-6 bags. Stalls sanitized between each use.

**\*\* NEW FOR THE 2020-21 SHOW SEASON! \*\***

**\*\$35 One-time 2020-21 Show Season Nomination Fee**

Per horse and rider combination. Includes point accrument, Year End Award nominations, guaranteed reduced stall rate at every show. *For additional horse(s): add \$10 per horse.*

**\*\$15 2020-21 Non-Nominated Show/Riding Fee**

No point accrument, No Year End Award nominations.

\*\$35 Trailer in/Day option

\*\$35 Non-showing fee

\*\$20 Per Class (3 class minimum)

\*\$35 Equitation Challenges (Requires entry of at least one Division)

\*\$35 High Jump, Mini Prix, 4 Bar (Requires entry of at least one Division)

\*\$45 Classics and Derbies (Requires entry of a least one Division)

\*\$20 Warm Up class entry/\$10 for additional unjudged warm up classes

\*\$25 Office Fee

\*\$10 Shavings per Bag

\*Now accepting credit cards with mobile check-out! 3% fee applies.

\*There will be a \$50 fee for any NSF / returned check

## ENTRIES AND STALL RESERVATIONS:

**224.645.1744 CALL/TEXT TO RESERVE STALLS & SHAVINGS.**

Please send your completed entry TWO WEEKS prior to show to one of the following:

ONLINE ENTRY and STALL RESERVATIONS VISIT:

[www.revolutionseries.org](http://www.revolutionseries.org)

EMAIL ENTRIES TO: [www.winterrevseries@aol.com](mailto:www.winterrevseries@aol.com)

MAIL ENTRIES TO: The Revolution Series, 8716 Hickory Lane, Wonder Lake, IL 60097



the REVOLUTION SERIES welcomes

DECEMBER 11-13, 2020 CLINICIAN + JUDGE

*Tina Judge-Boyle*

clinic session at 2'6" | \$175 clinic only | [www.revolutionseries.org](http://www.revolutionseries.org)

# Horsewomen of the Rev Series exhibition classes

---

Open to any Mother, Grandmother, Aunt, Sister, In-law or woman of the same relation supporting a Revolution Series rider at the show.

Sponsored by Prestige Sport Horses



## #48 HORSEWOMEN OF THE REV SERIES LEAD LINE

Revolution Series rider must lead any eligible female that supports that rider at the show. Attire: casual. Riders must have an approved helmet and shoes with a heel. Entry fee: \$5

## #49 HORSEWOMEN OF THE REV SERIES PAIRS WALK/TROT

Open to a Revolution Series rider and any eligible female that supports that rider at the show. Team to ride in pairs, working together to match walk and trot when called. Entry fee: \$20 per team. Winner awarded a Saddlers Row gift card. No Year End points accumulated.



# REVOLUTION SERIES Protocol for Clinic + Shows under Covid-19

*If you have been exposed to coronavirus, please help us stay safe, and stay home.*

*A signed COVID waiver is required. Masks should be worn for all unmounted exhibitors inside the show buildings including the barn. Please practice 6 feet social distancing guidelines when on the show grounds. The most current CDC guidelines will be followed; monitor our Facebook group for current show information.*

*Trainers and exhibitors are responsible for tracking temperatures. Anyone feeling unwell, or with a temperature should stay home.*

## **REVOLUTION STAFF PRECAUTIONS:**

*Temperature will be taken of all employees and volunteers daily. Masks will be worn by all Revolution Series staff and volunteers while inside the show buildings and barn.*

*Revolution Series Staff will be monitoring and reminding trainers and exhibitors about social distancing guidelines.*

## **Stay at home.**

If you have been exposed or feel unwell.



## **Check your temperature.**

Monitor your temperature every day at the show.



## **Wash your hands.**

Bathrooms will be sanitized every 30 minutes. Hand sanitizing stations will also be available.



## **Practice social distancing.**

Please keep a distance of 6 feet from others on show grounds, and when entering the show office.



## **Barns stabled separately.**

Each barn will be stabled in their own aisle.



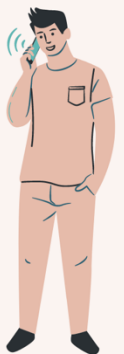
## **No spectators.**

Sorry, no spectators are allowed at this time.





## **Schooling, Show Office, Ribbons, Food Service.**

- Number of horses will be limited in the schooling ring. Jumps to be disinfected with spray after use.
- A maximum of four people in the office at a time with social distancing rules followed.
- Exhibitors are encouraged to fill out a credit card form or leave a check with their Trainer. Trainers will process their check out.
- Ribbons/prizes to be picked up by Trainers at the end of the show day.
- Our food vendor, Pixie Dawgs will have menus available. Please text in orders for prearranged pick-up.






# Revolution Series Rules

#1 Lead Line Class Fee: \$20	Children only eligible for Lead line Walk/Trot. Class will run with 1 rider or more.
#2 Lead Line Walk/Trot Class Fee: \$20	Children eligible only for Lead line. Handlers allowed but not mandatory for children just learning to trot on their own. Class will run with 1 rider or more and will be judged.
#3-5 Intro Walk/Trot Indiv. Canter Class Fee: \$20	Horses and riders will be judged at the walk and trot. Riders will be called to the center of the ring and be called individually to canter one lap in the direction of their choice. Riders can cross enter into Groundpoles division. Riders who have jumped X's or above at any show are ineligible. *Additional rules for Finals.
#6-8 TIP TB Cross rails Class Fee: \$20 per class Height: X's	Open to any rider who presents the office with TIP number with horses that have shown less than one consecutive year. Trotting into lines and cantering out while showing a simple change of lead is permissible. Horses may not cross enter into classes jumping higher than 2'3". TIP ribbons to be awarded for 1 <sup>st</sup> -6 <sup>th</sup> . 
#9-15 Ground Poles Hunter & Equitation Class Fee: \$20 per class	Open to eligible Jr./Amateur riders that will not jump O/F in any other class. One day shows Champion/Reserve, Champion are awarded to the riders with the most points in ALL of the Ground Pole classes (Hunter and Eq combined).
#16 - 18 TIP TB Suitable Hunter Class Fee: \$20 per class Height: 2'6"	Open to any rider who presents the office with TIP number. TIP ribbons to be awarded 1 <sup>st</sup> -6 <sup>th</sup> . 
#19 – 21 Future Hunter Class Fee: \$20 per class Height: 2'6"	Open to any horse and rider showing 2'6".
#22 \$200 Hunter Derby Class Fee: \$45 Height: 2'6"	This class is open to riders or horses only showing at 2'6 or above and entering at least one division. 8-10 jumps displaying the handiness of a hunter. May include trot jumps, rollback turns, sharper turns, broken lines, hand-gallop fences, a gate to open or close while mounted, properly show mounting and dismounting. Riders are awarded long ribbons and a special classic prize is awarded to the winner of the class. See Classic payout chart. Payouts will be adjusted if class minimums are not met. Requires 3 riders to run. *Additional rules for Finals.

#23 Equitation Challenge Class Fee: \$25 Height: 2'6"	Open to Junior or Amateur riders showing in at least one 2'6" division. Top 4 riders will be called back for a test. Winner will receive a medal. *Additional rules for Finals.
#24-26 Working Hunter Class Fee: \$20 per class Height: 2'9"	Eligible for horses showing at least 2'6".
#27–28 Jr./Adult Amateur Equitation Class Fee: \$20 per class Height: 2'6"	Open to Jr./Adult Amateurs showing 2'6" and above.
#29 – 31 Green as Grass Jumpers Class Fee: \$20 per class Height: 2'0" – 2'3"	Open to any horse that has shown less than 2 years. No jumping combinations. Riders may cross enter into Puddle Jumpers.
#32 – 34 Future Jumpers Class Fee: \$20 per class Height: 2'6"	Open to any horse and rider showing 2'6". Jump combinations are allowed.
#35–37 Training Jumper Class Fee: \$20 per class Height: 2'9" – 3'3"	Open to any horse and rider showing 2'6" and above.
#38 \$100 High Jump/ Mini Prix/ 4 Bar Class Fee: \$35 Height: Varies	HIGH JUMP: fence height starting at 2'3" and will increase in 3" increments after a cleared effort. Riders will receive a warm-up jump in the show arena set at 2'6". This jump is optional and unjudged. Riders will be eliminated for jumping faults or refusals. Riders are eligible to show in this class if they are entered in at least one 2'6" or higher division. Winner awarded the \$100 prize money. MINI PRIX: Height is 3'6 - 4'0 to include combinations. One Joker fence in both rounds which Management will decide the height and offer 6 seconds off the time limit if cleared. Table II Sec A format. Payouts will be adjusted if class minimums are not met. Requires 3 riders to run. 4 BAR CHALLENGE: Course is set with 4 verticals, 2 strides in between, beginning at 2'3". Bars will be raised as class continues; riders are eliminated as they have jumping faults through the 4 bar. The horse and rider that clears the highest height wins the \$100 prize money. A jump off may take place to determine ties. Horses must be entered in at least one division at 2'6" or above.

#39 \$250 Jumper Classic Class Fee: \$45 Height: 2'6"	Open to Jr or Amateur riders. Jumping combinations allowed. Riders are awarded long ribbons and a special prize is awarded to the winner. Payouts will be adjusted if class minimums are not met. Requires 3 riders to run. See Classic payout chart. *Additional rules for Finals.
#40 – 44 Maiden Rider Hunter & Eq. Class Fee: \$20 per class Height: X's	Open to Jr./Adult Amateur riders that have won less than six blue ribbons at any show. Open to any horse. Riders may enter divisions that don't exceed 2'0". Height X's.
#45 – 47 Green As Grass Hunters Class fee: \$20 per class Height: X's	Open to horses that have shown less than 1 consecutive year. Open to any rider. Trotting into lines and cantering out while showing a simple change of lead is permissible. Horses may cross enter into 2'3" classes.
#50 – 54 Beginner Rider Hunters & Eq. Class Fee: \$ 20 per class Height: 1'9" – 2'0"	Eligible to riders who haven't shown above 2'3". Riders who've earned more than 6 ribbons at this level are not eligible. No oxers.
#55 \$250 2' Hunter Classic Class Fee: \$45 Height: 2'0"	Open to Jr/Adult Amateur riders showing up to 2'3". Riders may be asked to ride a bending line, a roll back or trot jump. Long ribbons and a special prize to be awarded to the winner. Payouts will be adjusted if class minimums are not met. Requires 3 riders to run. See Classic payout chart. *Additional rules for Finals.
#56 – 58 Low Hunter Class Fee: \$20 per class Height: 2'3"	Open to any horse and rider showing 2'6" or below.
#59-61 Green Hunter Class Fee: \$20 per class Height: 1'9"-2'0"	Open to all riders. Open to horses who have shown for less than 2 consecutive years under 2'3". No Oxers.
<b>CHECK OUT OUR DECEMBER EXHIBITION CLASSES!</b>	<p>#48 Horsewomen of the REV Series Lead Line #49 Horsewomen of the REV Series Pairs Walk/Trot</p> <p>Check out our ad in the prizelist for the rules to these special December exhibition classes!</p>

#62 Mini Equitation Challenge Class Fee: \$25 Height: 2'3"	Open to Jr or Amateur riders who haven't shown at 2'6" or above. Top 4 riders will be called back for a test or a test will be built within the first course. Height 2'3" Winners will receive a medal. *Additional Rules for Finals.
#63 \$150 Mini Hunter Derby Class Fee: \$45 Height: 2'3"	Open to Jr/Amateurs only. The top 4 riders will be called back for a Handy round. May include trot jumps, rollback turns, sharper turns, broken lines, hand-gallop fences, a gate to open or close while mounted, properly show mounting and dismounting. Riders are awarded long ribbons and a prize. Payouts will be adjusted if class minimums are not met. Requires 3 riders to run. See Classic payout chart. *Additional rules for Finals.
#64–66 Puddle Jumpers Class Fee: \$20 per class Height: 2'0-2'3"	Open to all riders. Open to horses who have shown for less than 2 consecutive years under 2'3". No Oxers.
#67 – 69 TIP TB Hopeful Jumper Class Fee: \$20 per class Height: 2'6"	Open to any rider who presents the office with Jockey Club TIP number. TIP ribbons awarded 1 <sup>st</sup> -6 <sup>th</sup> . Minimum 3 Riders. 
#70 TIP Thoroughbred Hunter Derby Class Fee: \$35 per class Height: 2'3" – 2'6"	Open to any rider who presents the office with Jockey Club TIP number. TIP ribbons awarded 1 <sup>st</sup> – 6 <sup>th</sup> with Medal and prize money to the Winner. \$50 in prize money awarded through TIP. Minimum 3 Riders. 
#72 TIP Thoroughbred Jumper Derby Class Fees: \$35 per class Height: 2'6"	Open to any rider who presents the office with Jockey Club TIP number. Must have competed in at least one Jumper division to be eligible. Jump height not to exceed 2'6" TIP ribbons awarded 1-6 <sup>th</sup> with Medal and prize money to the Winner. \$50 in prize money awarded through TIP. Minimum 3 riders. 
#74 \$250 Crossrail Classic Class Fee: \$45 Height: X's	Open to Amateurs only. Open to horses not jumping over 2'0". Riders are awarded long ribbons and a special prize is awarded to the winner. Payouts will be adjusted if class minimums are not met. Requires 3 riders to run. See Classic payout chart. *Additional rules for Finals
#80-#86 Warm-UP Class Fee: \$20 per class/\$10 additional	Open to all riders at any height including ground poles. Riders may return for additional unjudged rounds for \$10 each round but must be entered in the warm up (judged) class and in one division.

## REVOLUTION SERIES CLASSIC PAYOUTS

MINIMUM RIDERS FOR THE PAYOUT SCHEDULE:

**\$250 CLASSICS – 7 Riders**

**\$150-\$200 CLASSICS – 5 Riders**

**\$100 CLASSICS – 3 Riders**

### PAYOUT SCHEDULE

#### **\$250 JUMPER CLASSIC**

1<sup>st</sup> \$125 | 2<sup>nd</sup> \$75 | 3<sup>rd</sup> \$50

#### **\$200 HUNTER DERBY**

1<sup>st</sup> \$100 | 2<sup>nd</sup> \$65 | 3<sup>rd</sup> \$35

#### **\$100 MINI PRIX**

1<sup>st</sup> \$60 | 2<sup>nd</sup> \$25 | 3<sup>rd</sup> \$15

#### **\$250 2' HUNTER CLASSIC**

1<sup>st</sup> \$125 | 2<sup>nd</sup> \$75 | 3<sup>rd</sup> \$50

#### **\$150 MINI HUNTER DERBY**

1<sup>st</sup> \$75 | 2<sup>nd</sup> \$50 | 3<sup>rd</sup> \$25

#### **\$250 CROSSRAIL CLASSIC**

1<sup>st</sup> \$125 | 2<sup>nd</sup> \$75 | 3<sup>rd</sup> \$50



## YEAR END AWARDS QUALIFICATIONS

Nominated riders participating in the Revolution Series shows from November – September will accumulate points from each show. The nominated riders with the most points at the end of the year will receive special ribbons 1<sup>st</sup>- 6<sup>th</sup>. Prizes and ribbons will be awarded at our Year End award party in November. The Division must have at least 3 riders accumulating points with attendance of more than 1 show to qualify for a year end prize and/or ribbon. Ties will be broken by the nominated rider who attended the most shows, and then by the nominated rider with the most points over fences. Final classes in each division at the Series Finals will be weighted 2x more. Equitation Challenges, Hunter Handy/Derby, Jumper Classic, Mini Prix/High Jump, 2' Hunter Classic, Mini Hunter Derby and Crossrail Classic will be shown as Invitational Classics. No yearly points will be accrued for these classes since they are not divisions. Instead, riders will accumulate their points and the top scoring/placing riders will be invited into our Series Finals Invitational with increased prize money.



## HORSE SHOW INFORMATION

### ATTIRE:

Proper show attire is strongly encouraged for all classes. Collared shirts are permitted for leadline through the Beginner division. Half chaps with paddock boots are permitted in all classes. All Riders are required to wear USEF approved head gear. Braiding is not required, but highly recommended for Finals classes.

### CLASSES:

- \*USEF rules apply if not covered by Revolution Series.
- \*Management reserves the right to cancel, split or combine classes.
- \*Entry into any Classic, Eq.Challenge, Derby or Mini Prix/High Jump/4 Bar requires entry in at least one division. Minimum of 4 riders in \$100 Classics.
- \*Ribbons will be offered for each class. Prizes offered to Champion and Reserve Champion riders with at least 3 riders. Entry in the entire division is required for Champion and Reserve Champion eligibility. Medals awarded in Equitation Challenges.
- \*Exhibitors are expected to be prompt for their classes. 2-minute gate call rule will be enforced and followed.
- \*Exhibitors are ALL expected to follow good sportsman like behavior

### STALLS:

- \*Revolution Series suggests 4-6 shavings.
- \*Stalls and shavings can be reserved online or by calling/texting Ashley 224-645-1744. Orders must be in one week prior to show.
- \*Stalls will be available after 12:30pm on Friday.
- \*Stall requests with completed entries are requested 2 weeks before the show. **Entries Close one week prior to show.**

### HOTELS AND CAMPING:

Show Grounds Camping: \$40/night, electric included (30 amp) showers available.  
For reservations, text show management at: 224.645.1744

Best Western Woodstock Inn: 815.337.0065  
Comfort Inn Crystal Lake: 815.444.0040

### SCHOOLING:

Friday Schooling: 1:00-3:30pm, 6:30-9:30 pm

Schooling closed during clinic

Saturday Schooling: 5:00am-7:00am

Sunday Schooling: 5:00am-7:00am

Lunging is allowed in the schooling arena during schooling hours only!

### MISCELLANEOUS:

**PLEASE NOTE:** Cancellations after Monday at noon preceding the show (except for a Vet's excuse) are billed to the trainer.  
No outside shavings or straw – call early to order additional shavings.  
Stalls have concrete flooring and are not matted.  
*Horse must have proof of updated Equine Influenza Virus, Equine Herpes Virus vaccinations and Coggins*

#### FOOD VENDOR ON SITE: **Pixie Dawgs**

Present throughout the clinic & show, Saturday-Sunday with a full menu!

---

Save your profile when you enter online at:

[www.revolutionseries.org](http://www.revolutionseries.org)

Join us on Facebook, Instagram and for announcements, updates and coverage from our shows.

**Please review our enclosed COVID-19 Protocols before the show!**

# REVOLUTION SERIES December 11-13, 2020

## HORSE

Show Name: \_\_\_\_\_

Sex: Mare / Gelding Color: \_\_\_\_\_ Age: \_\_\_\_\_ Height: \_\_\_\_\_

## OWNER

Name: \_\_\_\_\_

Address: \_\_\_\_\_

City: \_\_\_\_\_ State: \_\_\_\_\_ Zip: \_\_\_\_\_

Phone: \_\_\_\_\_ Age (Date): \_\_\_\_\_

Email: \_\_\_\_\_

Signature: \_\_\_\_\_

## Rider 1

Name: \_\_\_\_\_

Address: \_\_\_\_\_

City: \_\_\_\_\_ State: \_\_\_\_\_ Zip: \_\_\_\_\_

Phone: \_\_\_\_\_ Age (Date): \_\_\_\_\_

Email: \_\_\_\_\_

Signature: \_\_\_\_\_

## Rider 2

Name: \_\_\_\_\_

Address: \_\_\_\_\_

City: \_\_\_\_\_ State: \_\_\_\_\_ Zip: \_\_\_\_\_

Phone: \_\_\_\_\_ Age (Date): \_\_\_\_\_

Email: \_\_\_\_\_

Signature: \_\_\_\_\_

## Trainer / Barn

Name: \_\_\_\_\_

Address: \_\_\_\_\_

City: \_\_\_\_\_ State: \_\_\_\_\_ Zip: \_\_\_\_\_

Phone: \_\_\_\_\_

Email: \_\_\_\_\_

Signature: \_\_\_\_\_

Stabled with: \_\_\_\_\_

Please submit completed entry 2 weeks prior to show date.

Enter online, or send to one of the below:

ENTER ONLINE AT: [www.revolutionseries.org](http://www.revolutionseries.org)

EMAIL ENTRY TO: winterrevseries@aol.com

MAIL ENTRY TO: The Revolution Series, 8716 Hickory Lane, Wonder Lake, IL 60097

## FEE SCHEDULE

NOMINATED STALL FEE \$48 \_\_\_\_\_

NON-NOMINATED STALL FEE \$60 \_\_\_\_\_

SHAVINGS \_\_\_\_\_ X \$10 \_\_\_\_\_

TACK STALL \$75 \_\_\_\_\_

2020-21 NOMINATION FEE \$35 \_\_\_\_\_

2020-21 NON NOMINATION FEE \$15 \_\_\_\_\_

OFFICE FEE \$25 \_\_\_\_\_

CLASS FEES \_\_\_\_\_ X \$20 EXHIBITION CLASS #48 \_\_\_\_\_ X \$5 EXHIBITION CLASS #49 \_\_\_\_\_ X \$20 \_\_\_\_\_

EQUITATION CHALLENGES \_\_\_\_\_ X \$35 \_\_\_\_\_

HIGH JUMP, MINI PRIX, 4 BAR \_\_\_\_\_ X \$35 \_\_\_\_\_

CLASSICS, DERBIES \_\_\_\_\_ X \$45 \_\_\_\_\_

CLINIC FEE \$175 \_\_\_\_\_

NON-SHOWING FEE \$35 \_\_\_\_\_

TRAILER-IN FEE (Per Day) \$35 \_\_\_\_\_

CAMPING ON-SITE \$40/NIGHT \_\_\_\_\_

**TOTAL AMOUNT DUE:** \$ \_\_\_\_\_

Please make check payable to: Revolution Series Check # \_\_\_\_\_

Now accepting credit cards with mobile billing! Contact our Show Office - 3% Service Fee applies

**CLINIC SCHEDULE:** 2'6" GROUP: 4:30-6:30pm Friday

**Rider 1** Class Numbers: \_\_\_\_\_

Clinic Group: \_\_\_\_\_

**Rider 2** Class Numbers: \_\_\_\_\_

Clinic Group: \_\_\_\_\_

MINORS TO SHOW & CATCH RIDERS PLEASE SIGN:

Catch Rider Parent or Guardian signing this indicates that they have read the clauses below and also give permission for the catch rider minor to compete per the agreement below.

**"Warning:** Under the Equine Activity Liability Act, each participant who engages in an equine activity expressly assumes the risks of engaging in and legal responsibility for injury, loss, or damage to person or property resulting from the risk of equine activities." (Senate Bill 240-IL)

The signatory(s) below agree(s) to hold the Revolution Series, Inc and their affiliates, employees, and volunteers harmless for lost, damaged, or stolen property and harmless for death or injury or loss to horses, exhibitors and spectators before, during or after the horse show.

PERMISSION FOR MINOR TO SHOW – I hereby consent to the entry of

(Name): \_\_\_\_\_

age (as of 1/1/19) \_\_\_\_\_, my child, in this horse show and certify that I have read the representation and statements, and that the same may be deemed a part hereof and hereby accept responsibility there under for the participation of said minor.

Signature below of Parent/Guardian:

\_\_\_\_\_



*Catch every new episode of*  
**HORSE SHOW LIFE**

*Hosted by*  
*Elizabeth*  
*Rietesel-*  
*Karlen*

*Only on*  
www.  
revolutionseries.org



## **Revolution Series, Inc. ENTRY AGREEMENT**

I have read the Revolution Series, Inc. (the “Revolution Series”) Entry Agreement as printed in the Prize List for this Competition and agree to all of its provisions. I understand and agree that by entering this Competition, I am subject to Revolution Series Rules, the Prize List, and local rules of the competition.

### **Release, Assumption of Risk, Waiver and Indemnification**

This document waives important legal rights. Read it carefully before signing.

I AGREE in consideration for my participation in this Competition to the following:

I AGREE that the “Revolution Series” and “Competition” as used above includes all of their officials, officers, directors, employees, agents, personnel, volunteers and affiliated organizations.

I AGREE that I choose to participate voluntarily in the Competition with my horse, as a rider, driver, handler, vaulter, longeur, lessee, owner, agent, coach, trainer, or as parent or guardian of a junior exhibitor. I am fully aware and acknowledge that horse sports and the Competition involve inherent dangerous risks of accident, loss, and serious bodily injury including broken bones, head injuries, trauma, pain, suffering, or death (“Harm”).

I AGREE to hold harmless and release the Revolution Series and the Competition from all claims for money damages or otherwise for any Harm to me or my horse and for any Harm of any nature caused by me or my horse to others, even if the Harm arises or results, directly or indirectly, from the negligence of the Revolution Series or the Competition.

I AGREE to expressly assume all risks of Harm to me or my horse, including Harm resulting from the negligence of the Revolution Series or the Competition.

I AGREE to indemnify (that is, to pay any losses, damages, or costs incurred by) the Revolution Series and the Competition and to hold them harmless with respect to claims for Harm to me or my horse, and for claims made by others for any Harm caused by me or my horse while at the Competition.

I have read the Revolution Series Rules about protective equipment, including GR801 and, if applicable, EV114 and I understand that I am entitled to wear protective equipment without penalty, and I acknowledge that the Revolution Series strongly encourages me to do so while WARNING that no protective equipment can guard against all injuries. If I am a parent or guardian of a Junior exhibitor, I consent to the child’s participation and AGREE to all of the above provisions and AGREE to assume all of the obligations of this Release on the child’s behalf. I represent that I have the requisite training, coaching and abilities to safely compete in this competition.

I AGREE that if I am injured at this competition, the medical personnel treating my injuries may provide information on my injury and treatment to the Revolution Series on the official Revolution Series accident/injury report form.

BY SIGNING BELOW, I AGREE to be bound by all applicable Revolution Series Rules and all terms and provisions of this entry blank and all terms and provisions of this Prize List.

If I am signing and submitting this Agreement electronically, I acknowledge that my electronic signature shall have the same validity, force and effect as if I affixed my signature by my own hand.

---

Signature of Rider or Parent of Minor Rider

**Revolution Series Horse Show  
Participant Waiver of Release**

**Covid-19 Information – Required**

1. To the best of your knowledge, have you had close contact with someone with suspected or confirmed COVID-19 infection within the last 14 days?

No \_\_\_\_\_

Yes \_\_\_\_\_

Please explain:

\_\_\_\_\_

2. Are you currently experiencing or have you had any of these symptoms in the last 14 days?

Fever greater than 99.1F \_\_\_\_\_

Difficulty breathing \_\_\_\_\_

Persistent cough \_\_\_\_\_

Sore Throat \_\_\_\_\_

General malaise (aches, headaches, etc.) \_\_\_\_\_

I understand that while I am on the premises of Beyond Stable Farm I am required to follow the guidelines that have been provided to me, including, but not limited to: wearing a nose and mouth covering facial mask/covering; following sanitizing protocol as set forth by the Revolution Series Horse Show, state, and the CDC; practicing social distancing as outlined by the Revolution Series Horse Show, state, and CDC. Failure on my part to comply with any guidelines set forth by the Revolution Series Horse Show will result in a request to exit the property and denial of participation in the Revolution Series Horse Show. \_\_\_\_\_ (initial)

Release of Liability: I agree that neither the Revolution Series Horse Show or the officials & volunteers of this show will be responsible for any accident, damage, loss or injury to horse, owner, rider or other persons or property. It is the condition of entry that each exhibitor shall hold the horse show, the facility & it's management, blameless for any loss or accident to any animal, person or property that may occur while on the premises or during the show. I further agree that I will not hold Revolution Series Horse Show, their owner or employees responsible should I develop symptoms of or receive a diagnosis of COVID-19 following this event. Furthermore, I agree to ride/drive at my own risk and hold harmless any

other owner or exhibitor from any accident or injury sustained by me or my horse while participating in this event. Submission of an entry to this show constitutes agreement of the following: The exhibitor shall indemnify and hold harmless Revolution Series Horse Show, it's manager and their respective agents, contractors, officers, employees, directors, shareholders and assigns (together the "indemnities") harmless against any and all claims, demands, costs, and expenses, including reasonable legal fees, arising from the conduct of management of Exhibitor's business or it's use of the facilities of Beyond Stable Farm from any breach on the part of the Exhibitor, it's agents, contractors, employees, guests or invitees in/on the property of Beyond Stable Farm. If any action or proceeding is brought against and indemnity by reason of any such claim, the Exhibitor, upon notice from the Indemnity shall defend the action or proceeding by counsel acceptable to the Indemnity.

**WARNING: UNDER ILLINOIS STATUTE \_\_\_\_\_, AN EQUINE PROFESSIONAL IS NOT LIABLE FOR AN INJURY TO OR THE DEATH OF A PARTICIPANT IN EQUINE ACTIVITIES RESULTING FROM THE INHERENT RISKS OF EQUINE ACTIVITIES.**

RIDER/DRIVER/HANDLER (Mandatory)

Signature Required (Parent/Guardian if Under 18)

Signature \_\_\_\_\_

Print Name \_\_\_\_\_

OWNER/AGENT (Mandatory)

Signature Required (Parent/Guardian if Under 18)

Signature \_\_\_\_\_

Print Name \_\_\_\_\_

PARENT/GUARDIAN SIGNATURE

(Required if rider/driver/handler is a Minor)

Signature \_\_\_\_\_

Print Name \_\_\_\_\_



# REVOLUTION SERIES SHOW SCHEDULE

## FRIDAY

Stalls available at 12:00pm

1:00-3:30, 6:30-9:30 pm, Schooling open

4:30pm-6:30pm, Clinic Group (2'6")

## SATURDAY & SUNDAY

5:00am-7:00am, Schooling open both days

### 8:00 AM SATURDAY:

- 1 Lead Line
- 2 Lead Line Walk/Trot
- 3 Introductory Walk/Trot
- 4 Introductory Walk/Trot Equitation
- 5 Walk/Trot/Individual Canter
- 9 Walk/Trot Hunter for Ground Poles U/S
- 10 W/T/Individual Canter Hunter for Ground Poles U/S
- 13 Walk/Trot Equitation for Ground Poles Flat
- 14 W/T/Individual Canter Equitation for Ground Poles Flat
- 48 Horsemanship of the REV Series Lead Line
- 49 Horsemanship of the REV Series Pairs Walk/Trot
- 80 Warm Up Ground Poles O/F
- 11,12 Ground Poles Hunter O/F
- 15 Ground Poles Eq O/F
- 58 Low Hunter U/S
- 85 2'3" Warm Up O/F
- 56,57 Low Hunter O/F 2'3"
- 62 Mini Equitation Challenge 2'3"
- 63 \$150 Mini Hunter Derby 2'3"
- 81 2'6" Warm Up O/F
- 19,20 Future Hunter O/F 2'6"
- 16,17 TIP Suitable Hunter O/F 2'6"
- 27 Jr/Adult Amateur Equitation O/F 2'6"
- 23 Equitation Challenge O/F 2'6"
- 82 2'9" Warm Up O/F
- 24,25 Working Hunter O/F 2'9"
- 26 Working Hunter U/S
- 28 Jr/Adult Amateur Equitation Flat



## SATURDAY CONTINUED

- 18 TIP Suitable Hunter U/S
- 21 Future Hunter U/S
- 70 TIP Hunter Derby O/F 2'6"
- 22 \$200 Hunter Derby O/F 2'6"
- 64 Puddle Jumpers I 2'0"-2'3" (Jr./Am.) Table V Sec I
- 29 Green as Grass Jumpers I 2'0"-2'3" Table V Sec I
- 67 TIP Hopeful Jumpers I 2'6" Table V Sec I
- 32 Future Jumpers I 2'6" Table V Sec I
- 35 Training Jumpers I 2'9"-3'3" Table V Sec I
- 38 \$100 High Jump 2'3" starting height



### 8:00 AM SUNDAY:

- 65,66 Puddle Jumpers II 2'0"-2'3" (Jr./Am)
- 30,31 Green as Grass Jumpers II 2'0"-2'3"
- 68,69 TIP Hopeful Jumpers II 2'6"
- 33,34 Future Jumpers II 2'6"
- 39 \$250 Jumper Classic 2'6"
- 72 TIP Jumper Derby 2'6"
- 36,37 Training Jumpers II 2'9"-3'3"
- 83 X's Schooling O/F
- 40,41 Maiden Rider Hunter O/F X's
- 43 Maiden Rider Equitation X's
- 45,46 Green as Grass Hunter X's
- 6,7 TIP Crossrails Hunter O/F X's
- 74 \$250 Crossrail Classic X's
- 42 Maiden Rider Hunter U/S
- 44 Maiden Rider Equitation Flat
- 47 Green as Grass Hunter U/S
- 8 TIP Crossrails Hunter U/S
- 61 Green Hunter U/S
- 52 Beginner Rider Hunter U/S
- 54 Beginner Rider Equitation Flat
- 84 1'9"-2'0" Warm-Up O/F
- 59,60 Green Hunter O/F 1'9"-2'0"
- 50,51 Beginner Rider Hunter O/F 1'9"-2'0"
- 53 Beginner Rider Equitation O/F 1'9"-2'0"
- 55 \$250 2' Hunter Classic 2'0"





## Ride a **Thoroughbred**?

Provide T.I.P. Numbers  
with your entries.

For more information and to see  
if your Thoroughbred is eligible,  
visit *[tjctip.com](http://tjctip.com)*.

Show us what your Thoroughbred  
can do at *[facebook.com/tjctip](https://facebook.com/tjctip)*

Good luck to the  
Thoroughbreds and riders!

# THANK YOU TO OUR SERIES SPONSORS!



Idlehour MagnaWave

KT Custom Jumps

Contact us at: [www.winterrevseries@aol.com](mailto:www.winterrevseries@aol.com) for Sponsorship opportunities.